



## quiet | comfort | protected | sustainable

It's what every homeowner looks for when considering a new townhome purchase.

These intangibles are very much dependent on your neighbors—those living on the other side of the wall.

Good fences make great neighbors, And in the townhome dwelling, it's what is inside the wall that makes a great fence—a proven fire protector and superior sound and odor barrier.



### FIRE PROTECTION

Time is of the essence in a fire. Protection of personal property and treasured mementos is also of paramount concern for multi-family residents.

- The SANCTUARY Two-Hour Firewall, the UL-U370 assembly, has been rigorously tested by Underwriters Laboratories and has high performance fire protection capabilities.
- Ideal for townhomes and commercial construction, Greenfiber SANCTUARY FRM Insulation, when used in combination with our proprietary UL-U370 firewall design offers unparalleled fire resistance, achieving a Two-Hour Fire Resistance Rating.<sup>1</sup>

### LOWER ACH & REDUCED AIR INFILTRATION

The U370 firewall reduces air infiltration rates, lowering the number of air changes per hour (ACH). In comparison to traditional assemblies that include a one-inch air space, the entire cavity in the U370 firewall is filled with dense, Greenfiber FRM Insulation.

- Helps construction projects comply with the prescriptive air infiltration requirements of stringent energy efficiency codes, e.g., ACH3 to ACH5.
- Reduces odor transmission between units

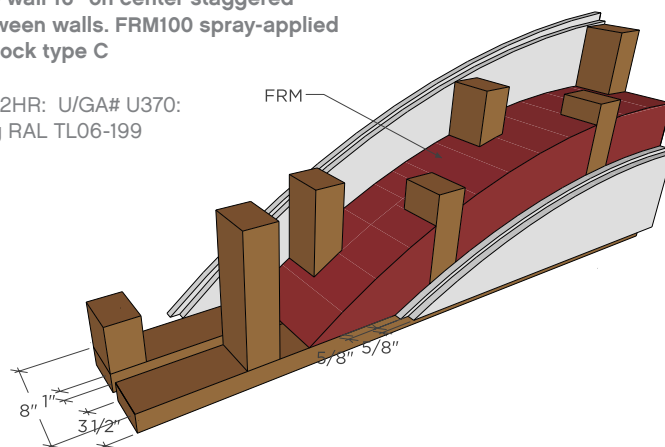
### SOUND PERFORMANCE

It's been proven that a reduction in sound power of even 5 decibels, would save our economy approximately \$3.9 Billion<sup>2</sup> in treating cardiovascular diseases. So not only does unwanted noise affect the state of our minds, it affects the state of our bodies as well.

- The SANCTUARY Two-Hour Firewall Fire Separation Wall is engineered to achieve better sound abatement.
- The high STC 61 rating makes it one of the most effective sound blocking firewalls available to the building industry.

**2x4 double wall 16" on center staggered  
1" gap between walls. FRM100 spray-applied  
5/8" sheetrock type C**

Fire rating: 2HR: U/GA# U370:  
STC testing RAL TL06-199



1. Evaluation Services Report 2016. 2. American Journal of Preventative Medicine—Valuing Quiet—An Economic Assessment of U.S. Environmental Noise as a Cardiovascular Health Hazard.

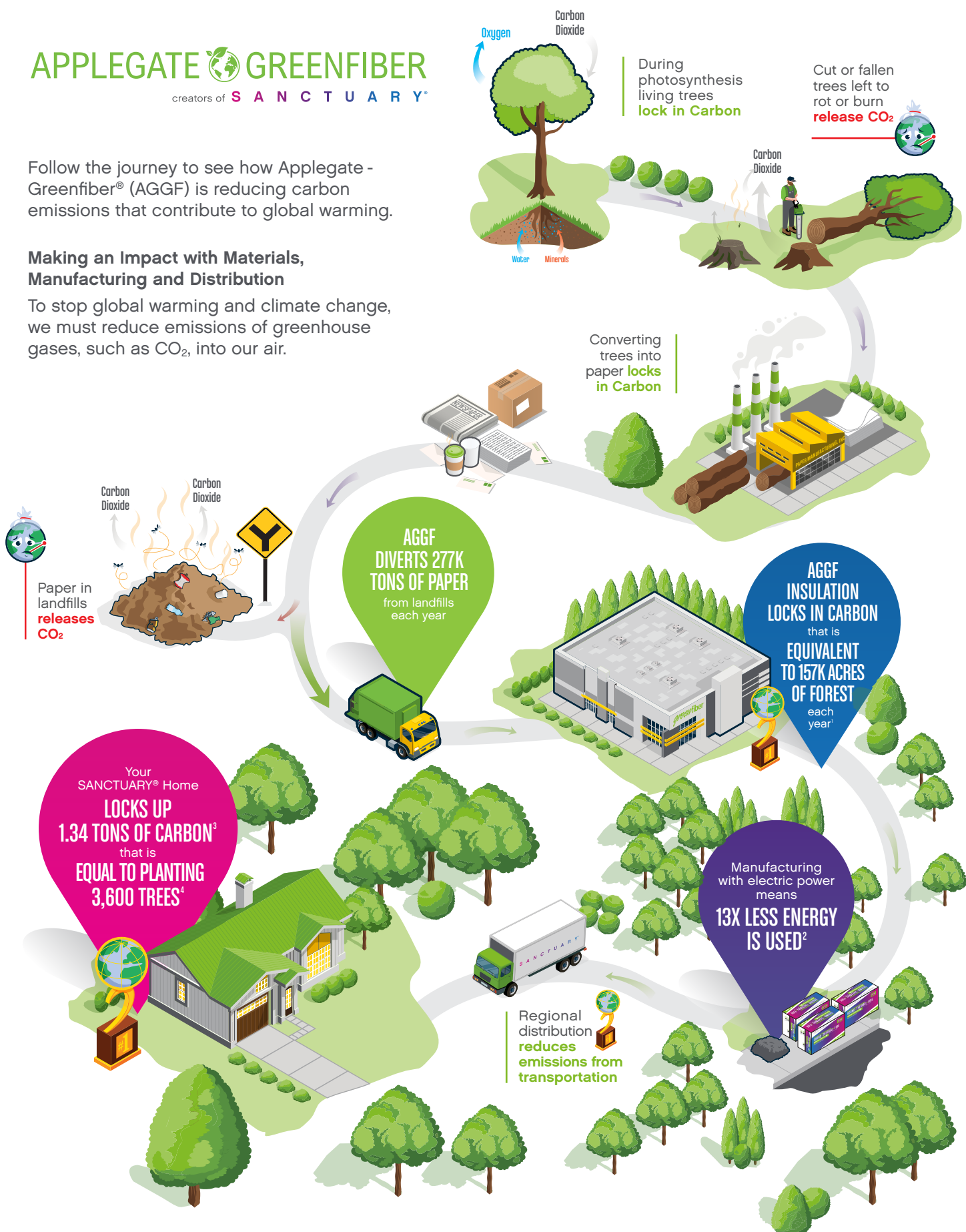
# APPLEGATE GREENFIBER

creators of **SANCTUARY**

Follow the journey to see how Applegate - Greenfiber® (AGGF) is reducing carbon emissions that contribute to global warming.

## Making an Impact with Materials, Manufacturing and Distribution

To stop global warming and climate change, we must reduce emissions of greenhouse gases, such as CO<sub>2</sub>, into our air.



<sup>1</sup> Based on the CIMA/CIMAC LCA for manufacturing and WWF Biogenic Carbon Footprint Calculator for Harvested Wood Products. Tree sequestration statistics are based on the EPA Greenhouse Gas Equivalencies calculator @ <https://www.epa.gov/energy/greenhouse-gas-equivalencies-calculator>.  
<sup>2</sup> Comparison based on an R-30 value at one square foot coverage area. This comparison includes the production and energy used in the insulation manufacturing process. Based on Sustainability Impact Index - Prepared by Principal Partners.  
<sup>3</sup> Based on installing 235 bags of SANCTUARY in attic and walls of home.  
<sup>4</sup> Greenhouse gas equivalencies calculator (1.5 acres - based on planting trees 5 feet apart, equaling 2400 trees per acre).